



Why Go To Just ANY Worldcon?

New York in '86

The two headquarter hotels for the 1986 Worldcon in New York City will be The Sheraton Centre New York, located on Seventh Avenue at 52nd Street in midtown Manhattan, and the NY Marriott Marquis on 46th Street and Broadway, less than 500 yards away. The Sheraton Centre contains over 75,000 square feet of meeting and exhibit space, which includes the 30,000-square-foot Exhibit Hall. The Imperial Ballroom Suite, containing a suspended projection booth and permanent stage, seats over 3500 people. There are various other function rooms that will accommodate major items, through special interest groups and workshops. In addition, this hotel has set aside a block of 1200 bedrooms for our use, out of their total of 1800.

The Marriott has committed all of their ballrooms, meeting rooms and exhibit halls, offering over 80,000 square feet of function space. The Grand Ballroom provides almost 30,000 square feet, and seats 3500 people. The Exhibit Hall provides an additional 22,000 square feet of exhibit space. There are various other function rooms located throughout the convention levels of the hotel. The Marriott has set aside a block of 1500 bedrooms for our use, out of their total of almost 1900.

Between the Sheraton Centre and the Marriott Marquis, New York in '86 can offer more than 150,000 square feet of function space, with two 3500 person ballrooms and over 50,000 square feet of function space in the two Exhibit Halls, along with 2700 bedrooms in the two co-headquarter hotels.

This is supplemented by the space and bedrooms in our secondary hotels, as well. The City Squire, diagonally across the street from the Sheraton Centre, has eight meeting rooms of various sizes, and a block of 400 bedrooms for our use. The Omni Park Central Hotel, which is two short blocks north of our headquarter hotels, has over 20,000 square feet of diverse function space at our disposal, plus another 800 bedrooms.

This gives our Worldcon almost 200,000 square feet of meeting and exhibit space and a minimum of 3500 bedrooms already committed.

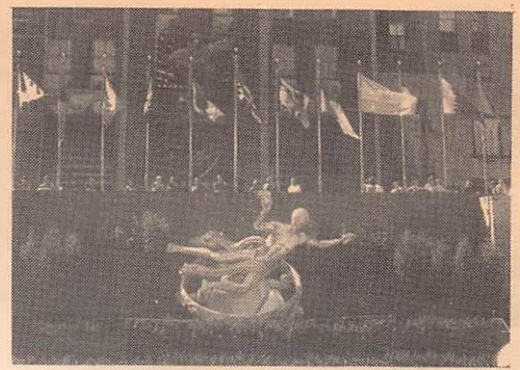
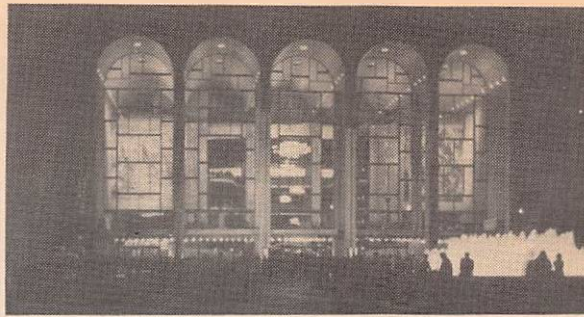
New York City is a major transportation center, easily accessible from anywhere in the world. From any major point of arrival, our hotels are only a short distance away via either public transit or other inexpensive forms of transportation.

Support New York in '86 for a Worldcon you'll remember!

For further information, contact:

NY in '86 • GPO Box 2586 • Brooklyn, New York 11202





ONLY IN NEW YORK!

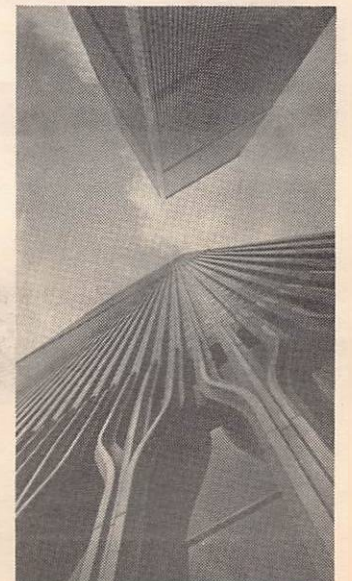
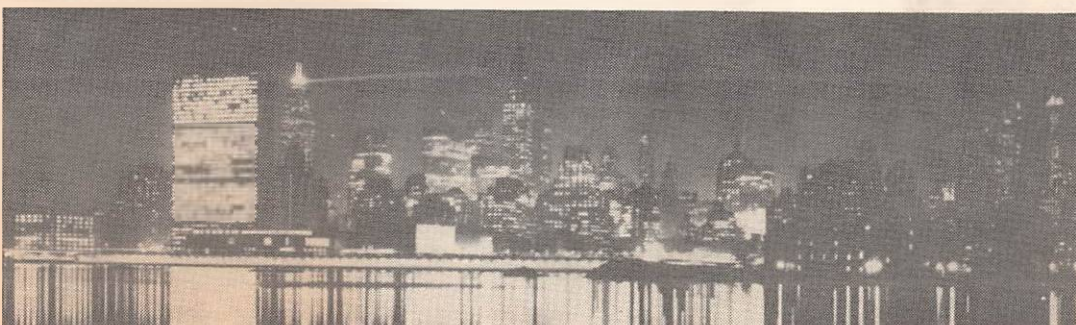
- The Most Famous Skyline in the World!
Including:

- The Empire State Building,
- The World Trade Center,
- The Statue of Liberty,
- The CityCorp Building,
- The Chrysler Building,
- The PanAm Building, etc.

- The United Nations Plaza
- Lincoln Center for the Performing Arts
- Broadway
- Times Square
- Rockefeller Center
- Wall Street
- Radio City Music Hall
- Madison Square Garden
- Bookstores - Hundreds of them!

- Including:
The Science Fiction Book Shop,
Forbidden Planet,
Murder Ink, etc.

- The Hayden Planetarium
- The Cloisters - a piece of Medieval history on the top of Manhattan
- Museums Galore, including:
The Metropolitan Museum of Art
The Museum of Natural History
The Museum of Modern Art
The Guggenheim
The Cooper-Hewitt
The Museum of Holography
The Morgan Library
The Museum of Broadcasting
- Incredible shopping experiences, including Macy's - the largest department store in the world!
- SoHo Galleries
- Greenwich Village, in all its *avant-gardeism*
- Park Avenue
- Little Italy
- Chinatown
- Restaurants for every culinary taste
- And Much, Much More!!!



Brought to you by: Devra Langsam, bid coordinator; Seth Breidbart; Walt Cole; Genny Dazzo; Linda Deneroff; Hope Liebowitz; Elan Litt; Teresa Minambres; Sue-Rae Rosenfeld; Elyse Rosenstein; Steve Rosenstein; Art Saha; Giani Siri; Anna Vargo.

